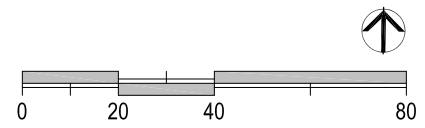
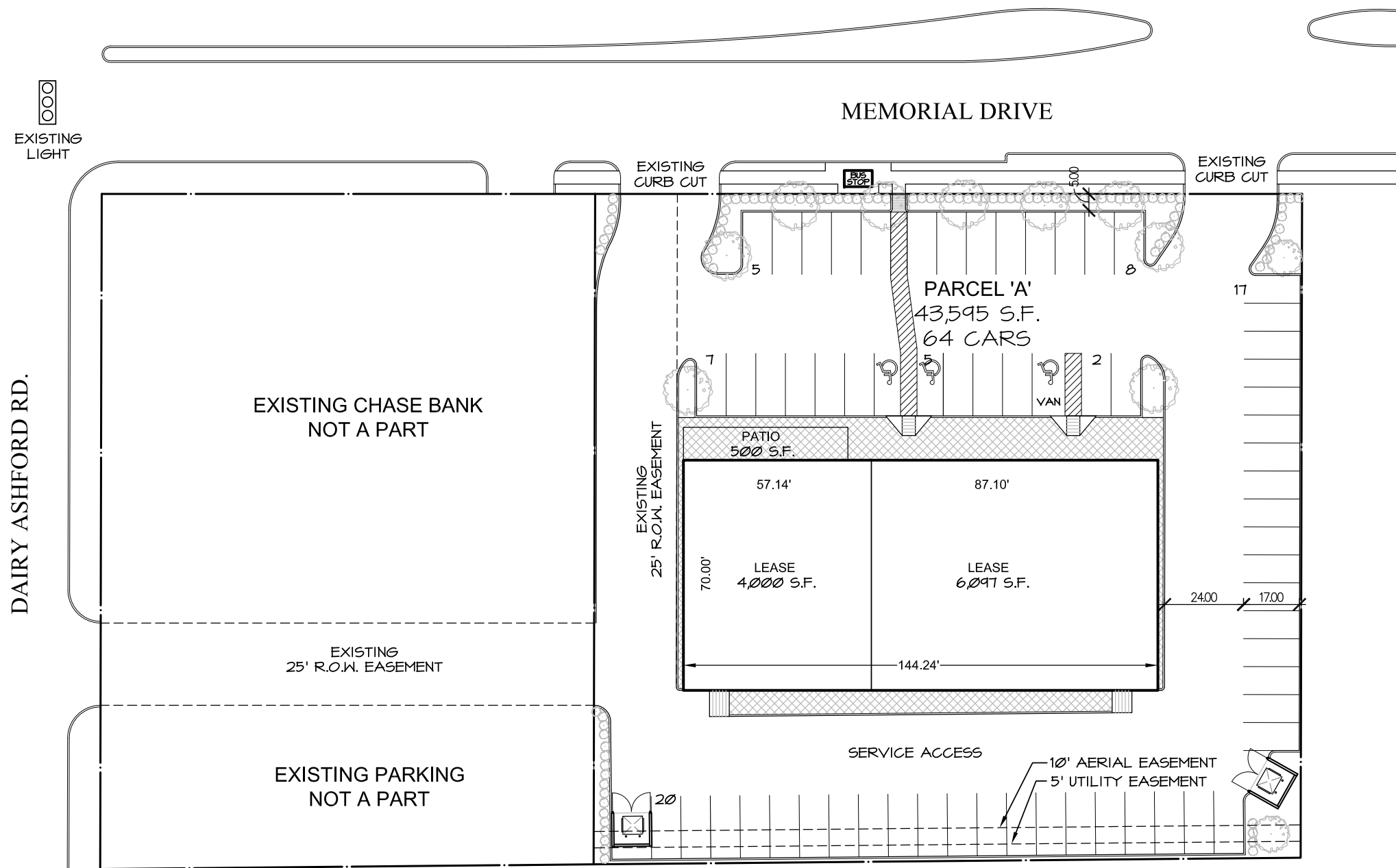


DEVELOPMENT SYNOPSIS

PARCEL	LAND AREA	BLDG. AREA	PARKING PROVIDED	PARKING RATIO	DENSITY %
PARCEL A	43,595 S.F. 1.00 AC.	10,097 S.F.	64 CARS	6.3 /1000	23.2 %



DEVELOPMENT OF
Vista
Equities Group

MEMORIAL AT DAIRY ASHFORD HOUSTON, TEXAS

SP-2
05-02-13

SITE PLAN

Hermes Architects

Members A.I.A.
1177 West Loop South, Ste. 500
Houston, Texas 77027
Tel. 713-785-3644
www.hermesarchitects.com
Houston-Dallas/Ft. Worth

INCOMPLETE
DRAWING- DO
NOT USE FOR
REGULATORY
APPROVAL
PERMIT OR
CONSTRUCTION

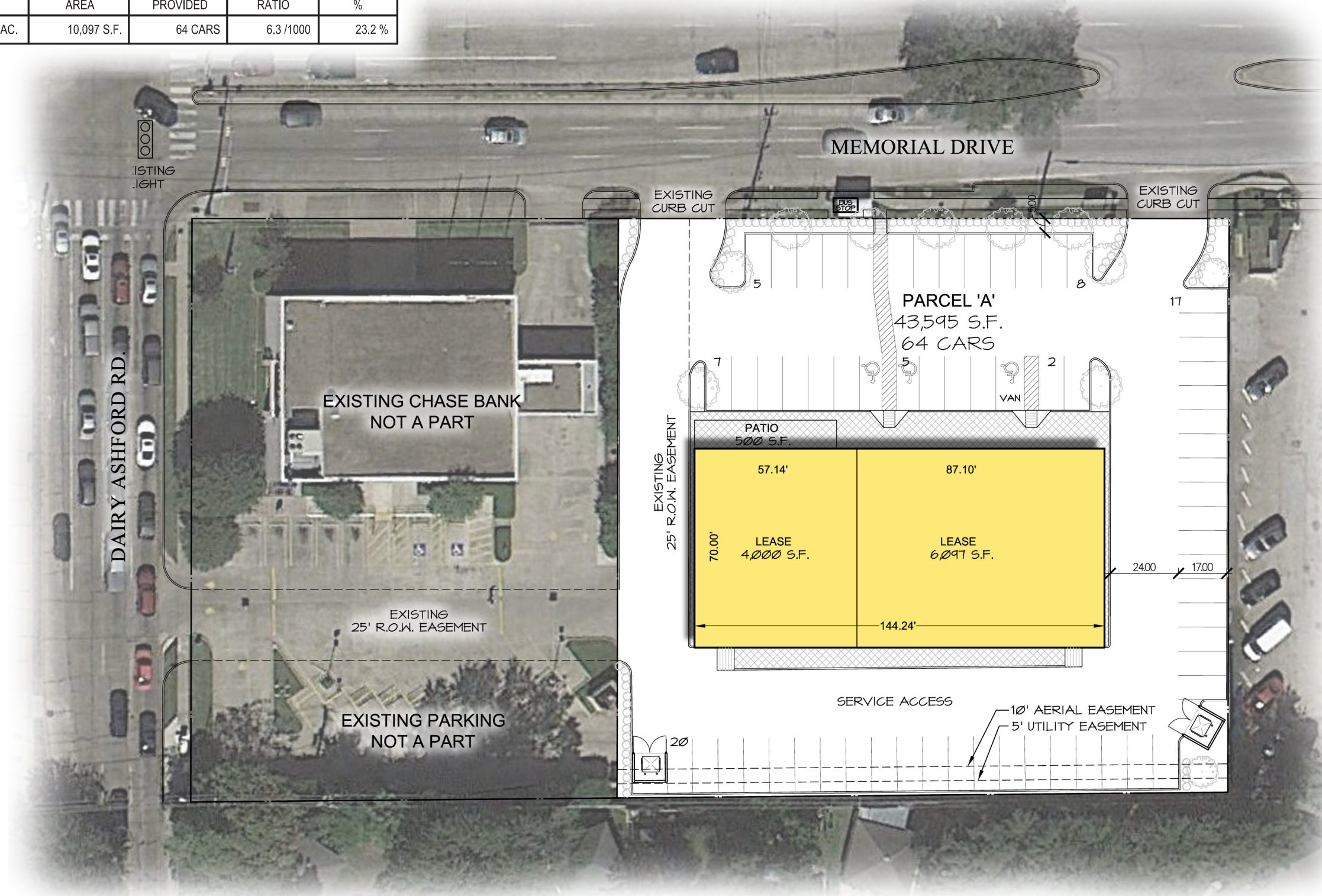
ARCHITECT: Marc Boucher
REGISTRATION # 14291
DATE: 05/02/13
JOB #: 1300600

This document is an instrument of service protected by the copyright law of the United States of America, 17 U.S.C. § 102, and shall not be copied or reproduced without the express written consent of Hermes Architects, Inc.
COPYRIGHT © 2011 Hermes Architects, Inc.

K:\1300600\DRAWINGS\1-CONCEPT DESIGN\A-SP-OPT 2-050113.DWG 5/2/2013 2:41:04 PM JASON MILLER

DEVELOPMENT SYNOPSIS

PARCEL	LAND AREA	BLDG. AREA	PARKING PROVIDED	PARKING RATIO	DENSITY %
PARCEL A	43,595 S.F. 1.00 AC.	10,097 S.F.	64 CARS	6.3 /1000	23.2 %



SITE PLAN
OPTION 2

Members A.I.A.
1177 West Loop South, Suite 500 | Houston, Texas 77027 | 713.785.3644